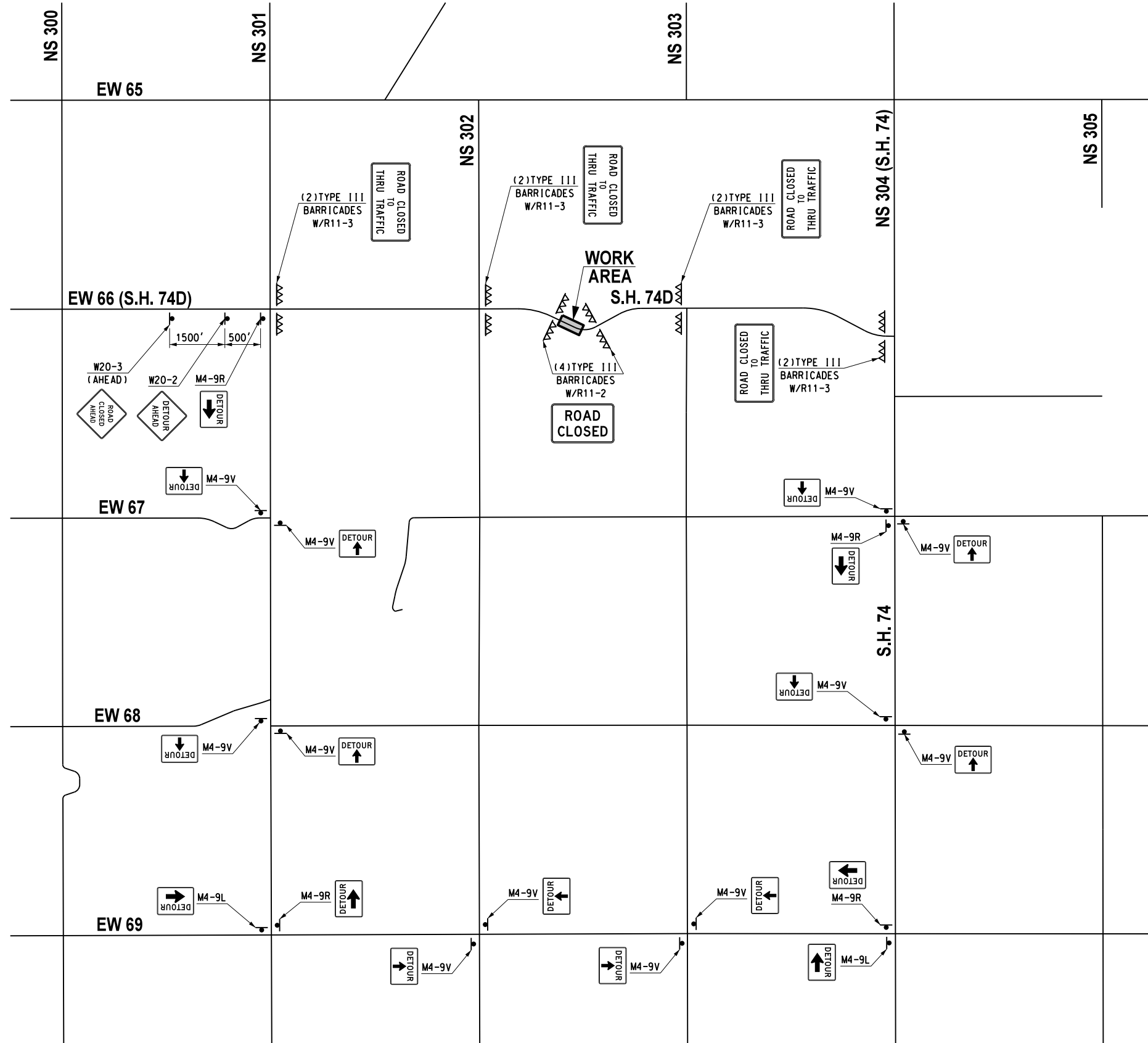


02/20/17 G:\IP\Projects\1-235\SH 74D Bridges east of Lovell\In Logan County, OK\CAD\74D DETOUR.dgn



Design	RWR	02/20/17
Drawn	CCC	02/20/17

PHASE 2
CONSTRUCTION DETOUR
S.H. 74D BRIDGE
 State Job No. 28312(04) Sheet No. 46

LOGAN COUNTY S.H. 74D